

S.W. 1/4  
SECTION 28, T.6N., R.2W., S.L.B. & M.

IN WEBER COUNTY  
SCALE 1" = 200'

TAXING UNIT: 53, 377

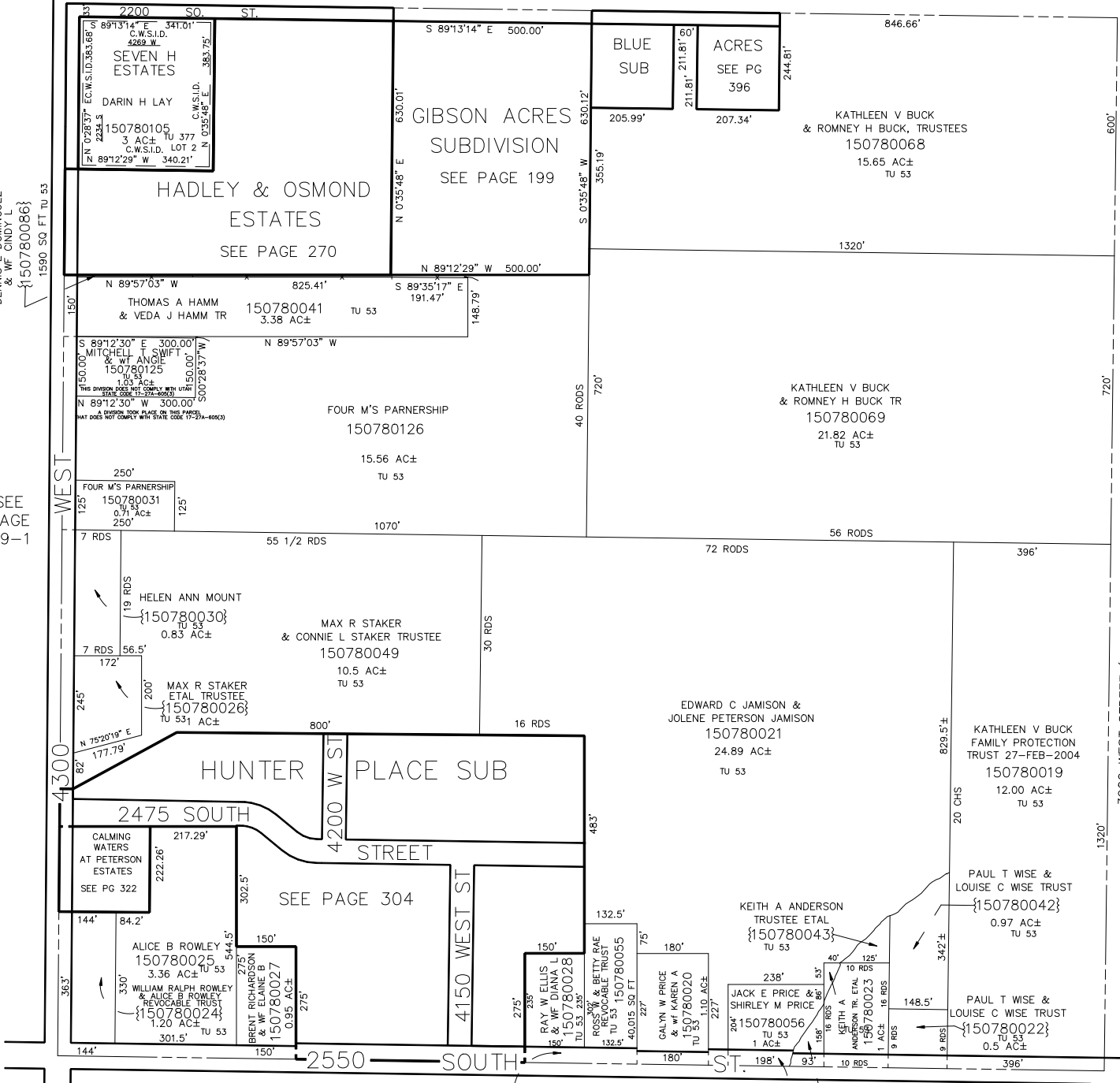
SEE PAGE 78-4

DENNIS E DOMINGUEZ  
& WF CINDY L  
{150780086}

SEE PAGE  
79-1

SEE PAGE  
78-2

3900 WEST STREET (NOT DEDICATED - STREET DOESN'T EXIST)



SEE PAGE 90-1

WEBER COUNTY  
{150780038}

WEBER COUNTY  
{150780054}

{150780043}

SEE PAGE 91